

Community Magazine

for Bermondsey & Rotherhithe

WINTER/SPRING

2020

ISSUE 07

London Borough of Southwark

Bermondsey Abbey

Founded as a Priory
of the Order of Cluny

Stood here
1082-1538

Voted by the People

London Borough of Southwark

Sailing of the Mayflower

In 1620 the Mayflower sailed from
Rotherhithe on the first stage of
its epic voyage to America

In command was Captain
Christopher Jones
of Rotherhithe

Voted by the People

London Borough of Southwark

Peek, Freaan

Founded in 1857

World-renowned biscuit maker
that gave Bermondsey the
name 'Biscuit Town'.

Voted by the People

London Borough of Southwark

Surrey Docks Fire

On September 7th 1940
the docks were set on
fire in the first raid
of the Blitz

Voted by the People

London Borough of Southwark

Surrey Docks Farm

Engaging and educating
the community in Rotherhithe
since 1975

Voted by the People

London Borough of Southwark

Time & Talents

Established 1887

Founded to improve the
living and working conditions of
women and children employed
in the factories and docks
of Bermondsey.

Voted by the People



Contents

Welcome!	03
New Pavilion	04
Southwark Park	05
The Cherry Garden	06
What the Dickens	07
Time & Talents	08
Bringing People Together	09
Plastic Free Water	10
Bermondsey's Joy Slide	11
London's Culture Mile	12
The Museum of London	13
Deep Down at Chambers Wharf	14
Community Funding	15
Dockland Settlements & Bosco Cafe	16
The Surrey Docks Farm	17
Music To Your Ears	18
All Tuned In	19
Seven Islands Leisure Centre	20
Leisure & Play	21
Business Start-up Space	22
Blue Plaques Galore	23

Welcome to the seventh edition of your **Community Magazine**. Over 5,000 copies are being delivered to local households, businesses and organisations. We very much hope you enjoy the first issue of 2020.

This issue's cover shows how the local area is blessed with an array of blue plaques commemorating people, places and events that have helped to make this area so special. However, there are notable people who have not been recognized. On page 23 we invite you to nominate people who should be recognized with a blue plaque of their own.

The photograph opposite is the exterior of the new pavilion in Southwark Park. This amazing building was only completed recently and is now open with a café for all of us to enjoy; see pages four and five for more details of this splendid new addition to the area.

The focus of this issue is to highlight what's happening in the local and wider area. As you'll see there are lots of great things happening in this historic part of London. For this issue we invited the Museum of London to share with you all that is on offer for the local community to explore especially for our young people.

There is more news about a new landscape and play proposal for George Row. See page 21 for how you can give your opinion. Please get involved, as this is a once in a generation opportunity to make efforts to improve our area.

The 'super-sewer' works at Chambers Wharf are continuing in earnest with the tunnel's very deep shaft almost complete. On page 14 there is more information from Tideway and on page 15 details of how the community can access their million pounds worth of funds. Residents living right next to this five-year project are feeling most of its impact. If you feel affected by the tunnelling works then you can get help and advice from Jackie Christie, who has been appointed by the Council to help residents who feel adversely affected by the works on Chambers Street, see page 14 for more details.

In 2020 this area will be commemorating the sailing of the Mayflower, from the Thames, 400 years ago when Captain Christopher Jones carried people to the 'New World'. We are hoping to publish a dedicated brochure for this important anniversary but this is dependent on raising sufficient funds. If any local organisation would like to get involved then do get in contact.

In the spring edition, we'll focus on the people who live in the area. If you'd like to be included in the next issue please get in touch. We're especially interested to hear from residents and businesses that can share some history of the area. We welcome your feedback about your Community Magazine and on page 23 we give more details of how you can share your thoughts.

Best wishes for 2020 from the Editorial & Design Team.



Editor

Larry Broomhead

Assistant Editors

Dan Skeen
Daisy Gillington

Sub-editor

Andrea Afolabi

Technical Support

Andrew Devanney

Design & Print

kreative.one
hello@kreative.one
www.kreative.one

Feedback welcome

Contact the Editor with your thoughts and suggestions

Magazine contact details

copyinfo@virginmedia.com
07960 975 155

The Magazine is published by
Peak Centre (UK) Ltd.
Reg. No. 05926216

Funded by:
Tideway's Community
Enhancement Fund administered
by Southwark Council

All information correct at time
of going to press.

PAVILION IN SOUTHWARK PARK

A splendid new pavilion arrives in Southwark Park. Bell Phillips Architects have just completed a brand new building with new landscaping by Kinnear Landscape Architects.

The single-storey pavilion includes a café, park offices and public amenities; reinforcing existing facilities while improving the day-to-day experience of people using the park.

Southwark Park is an important green space that is our largest 'garden' for all to enjoy!

In collaboration with Southwark Council, the architects shaped the brief for the building located in a pivotal position within the 25-hectare park. It is set between the boating lake, the former oval cricket field and the art gallery.

As is typical of parkland pavilions, the architects have provided a graceful response to the adjacent art gallery, lake and open green spaces. The new pavilion is discreet with three wings that extend out into the park and lake, creating triple-aspect views.

The organic form of the pavilion is derived from the curved geometry of the park's historic pathways, the oval playing fields and the adjacent lake edge. This results in a form that extends into the landscape and welcomes users from all directions. The 'arm' of the new building overlooks the lake has been extended to provide expansive views over both the lake and oval, while the northern facade of the building is angled to create a strong relationship with both the gallery and the existing route to the oval from Gomm Road.



Despite the pavilion's lightness of design, it adds definition to the spaces around it; the design works to create a large sheltered area that allows the café to spill onto the lake edge, giving residents a wonderful view of the lake.

From afar, the form of the pavilion appears modern and minimalistic, avoiding clustering or obscuring the skyline. Close up, however, the delicacy of the form becomes apparent; it recalls the picturesque modernism of past pavilions, porticoes and grottos of the historic Ranelagh and the Vauxhall pleasure gardens.

Hari Phillips, of Bell Phillips Architects, says "our aim for the Southwark Park Pavilion was to create a distinct addition to the historic park, through our collaboration with local residents, and our attention to the existing qualities of the site, we believe we have done that.

For us the pavilion is about excitement and delight, and we hope that future users can gain benefit for years to come."

Councillor Rebecca Lury, Southwark's cabinet member for Culture, Leisure, Equalities and Communities, adds "we've worked hard to bring about this impressive new building and it's set to be a great asset for everyone in the area. Southwark Park already draws many people, with its art gallery, the Ada Salter Rose Garden and the park's newly refurbished children's play area..."

The Pavilion was completed at the end of last year just in time to commemorate the park's 150th anniversary year. This historic park opened in 1869. The new building is part of a broader works carried out by the Council including the installation of the new band stand and other works to help improve the whole park for all to enjoy.

A NEW VENUE FOR ALL



Making Bermondsey more Beautiful in 2020

100 years ago Ada Salter formed a Beautification Committee at the local council. She had a vision of trees and flowers, with space for children to play, a beautiful environment for everyone!

The Cherry Garden Tenants & Residents' Association (TRA) tries to continue Ada's vision and has launched some great initiatives that aim to continue to make improvements to the area.

PLANTING

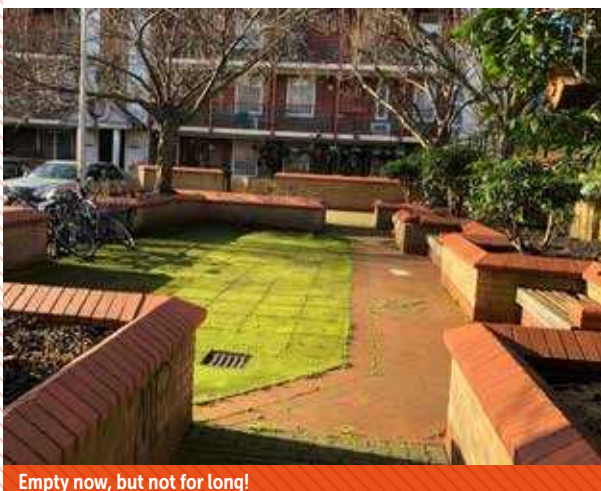
The TRA received Council funding to put extra plants in the raised flower beds on the Cherry Garden Estate. Lots of different flowers were planted in January; more will follow.



Planting at Morriss House

PLAYGROUND

With money provided by Tideway money given to the Council for better play provision in the local area, the TRA is getting new equipment installed in the very neglected little playground off Cherry Garden Street.



Empty now, but not for long!

PAVEMENTS

The historic Wilson Grove estate was designed by Ada and is now a conservation area. The TRA worked with local councillor Anood to develop plans to make improvements to this historic area. The Council has now started laying new pavements.



York stone paving round the Salter cottages

WINTER EVENTS

The TRA took 150 people to the Greenwich pantomime free-of-charge. The TRA gave Tesco shopping vouchers to 40 local pensioners and took 16 people for a delicious lunch at the Gregorian Pub on Jamaica Road.



Lottie and Tianna loved the panto!

If you are interested in our activities, please contact Sheila Taylor (TRA Chair) on 07906 860 979

FUTURE PLANS

The TRA will be organising coach outings again in the warmer months. Watch for their flyers and posters!

This TRA also manages the Hall on Jamaica Road that is available to hire. To book the Hall, The Ada Salter Room or The Studio Upstairs, contact Debbie on 07786 510 467.

WHAT THE DICKENS!

What's the Dickens Estate up to?

This is one of the largest tenants and residents' association in the whole of Southwark. It's based at Wade Hall, a lovely venue inside, recently redecorated, located near to Dockhead, off Parkers Row.

There are over 850 flats with almost 2,000 people who live on the Dickens Estate, in-between the river and Jamaica Road.

DATES FOR YOUR DIARY

This TRA will organise a **Family Trip** to the seaside as well as an Adult Trip too. More details to follow. The committee, chaired by the devoted Jo Woolgar, are also looking at other trips and events for the community; please keep an eye on noticeboards around the estate for details.

Saturday, 4th July: **Dickens Day** with a daytime kids party and afternoon tea for senior citizens. More details to follow in next edition of your Community Magazine in April.



General Meetings for 2020 of the Dickens TRA are held regularly. These are opportunities to find out more about what is going on and things that are planned for the Estate. You can also meet with Council officers to raise matters about your home, block of flats or on the estate in general. The next open meetings are planned as follows and all residents are very welcome to attend, meetings usually start at 7pm and are over by 9pm at the latest:

- Monday, 24th February
- Monday, 27th April
- Monday, 22nd June

Notices will go up month before to remind everyone who lives on the Dickens Estate.

The TRA is also looking at setting up a new Facebook Page to keep you all up to date on what's happening so keep an eye on noticeboards for more details!



	MONDAY	TUESDAY	WEDNESDAY	THURSDAY	FRIDAY	SATURDAY & SUNDAY
HALL ACTIVITIES	3.30-5.30pm Tennis with Dennis. Club for tots and children	2.30-4.30pm Smileys Playgroup	9.30-11.30am Smileys Playgroup	10.00-2.00pm Helping Hands Cookery Club		<p>Saturday and Sundays available for hall bookings for families parties</p> <p>For all hall bookings please contact Sheila on Club phone on 07923 044 616</p>
	Meeting night committee, general and Tideway	5.00-7.30pm Carragher Academy of Irish Dancing	4.00-7.00pm Capoeira for Children 7.30-8.30pm Capoeira for Adults	4.00-8.00pm Sharon's Tap and Ballet Classes	7.00-7.30pm Hall viewings, bookings for family events 7.30-9.00pm Adult Bingo Night	

TIME & TALENTS

Supporting Local Residents for over 130 Years

Time & Talents offers something for everyone. It has a long history of supporting people of all ages in Rotherhithe and Bermondsey, bringing people together for mutual support, fun and friendship.

Time & Talents is a lively, busy community centre in the heart of Rotherhithe. Set in a leafy heritage venue in an old mortuary as well as in T&T2, Their second venue in Surrey Quays Shopping Centre (opposite the entrance to Tesco). With a wide range of activities in the centres, along with volunteering and schools' outreach projects across the local area, they make sure that everyone feels part of a community.

This year, along with all of their much loved existing groups, T&T has a lots of exciting new projects for local people of all ages to get involved in. Perhaps you've resolved to start the new year helping others in your local community? Perhaps you want to get creative, more active, or get out in nature more? T&T has opportunities for all this and more!

Team Up, Take Part

With support from Comic Relief, T&T has launched a new sports and physical activity-based befriending programme called Team Up Take Part. They'll connect adults who may be lonely and keen to start exercising with a local volunteer befriender, who can share their love of sports and help them try new things.

We often hear how beneficial physical activity is for our wellbeing, but sometimes it's hard to know where to start, or scary to go to a new group or sports centre for the first time. By pairing adults who want to exercise with encouraging and supportive befrienders, the world of sport and activity can be opened up, and both can motivate each other to keep going as well as making new friends.

Sports can include anything from community walks, strength and balance classes, gym sessions, yoga, walking football and everything in-between. It can even be a passion for watching and supporting your local sports team.

If you're interested in joining the programme or becoming a volunteer befriender, please email: johnnightingale@timeandtalents.org.uk or call T&T.



Explorers Garden Club

Last summer, T&T launched Little Bugs Nature Club – a gardening club for children under five to in explore the outdoors in a safe yet fun environment in their Secret Garden.

After the popularity of this younger children's group, they're launching Explorers Garden Club, a Forest School for children aged 5-10. Following the principles of a Forest School within their walled garden, this group will allow children to explore the outdoors, build their resilience, lead their own play and make friends with children from other local schools.

Children will learn outdoor and survival skills, growing their own food and having fun along the way. The first session will start on Wednesday 15 April, at 4pm. To book please email: georgiahales@timeandtalents.org.uk or call T&T.

Snap & Chat Walking Groups

Every Wednesday, a group of older men set out from the Old Mortuary in search of life, but not as you might imagine. Together they search for the best that London has to offer - historical sites, places of interest, old villages, parks, canals, and forgotten streets.

They walk and wander, gallivant and meander. Some days, they 'coddiwomple' - this means to travel with purpose to an as yet uncertain destination! On average, they cover around 10,000 steps each week and have racked up over 200 miles in their first year. Improving their health is one goal, but to care and look out for each other, whilst having fun, is just as important.

In March they are introducing an additional walk on the last Wednesday each month (from 11am) and is open to all. This will be a shorter, dementia friendly, walk around SE16. Anyone interested, please email johnmahoney@timeandtalents.org.uk or call T&T.

www.timeandtalents.org.uk

BRINGING PEOPLE TOGETHER

The Animated River's Tale

T&T are bringing together people of all generations from Rotherhithe and Bermondsey's riverside community, as well as two local primary schools, to join a fun, creative project to make an animation inspired by Rudyard Kipling's poem The River's Tale, to be projected at a special show on the inner walls of the Brunel Tunnel shaft.

People of all ages and artistic abilities are invited to come to T&T2 in Surrey Quays and have a go at drawing and performing poetry, to tell Kipling's 'tale that the River told'.

Join the workshops in T&T2 on either Monday 4th May 12-4pm or Tuesday 5th May 1-5pm - or both! The showing will be on Friday 5th June at 1.45pm at the Brunel Museum. To book a place, please email: jemmabicknell@timeandtalents.org.uk or call T&T.

For more information on all these events see their website www.timeandtalents.org.uk or call on 020 7231 7845



Time & Talents
Where everyone feels part of a community

@time_talents
/timeandtalents2020

Charity of the Year
2019
Rotherhithe & Bermondsey

Befriending

Bringing people together across Bermondsey, Rotherhithe and North Southwark

A visit from a neighbour, friend or family brightens up the day, but not everyone has a regular visitor



We match local volunteers with older people to enjoy one-to-one friendship and reduce loneliness and isolation



Welcome a new visitor

If you are over 60, can't get out much and are interested in being matched with a Volunteer Befriender to visit regularly - or know someone who might be - call our Neighbourhood Care team on:

020 7232 5667

or email:
referrals@timeandtalents.org.uk

Whether it's crafting, quizzes, sport or just a cup of tea and a regular chat, we aim to match people who share interests to enjoy time together

Become a Volunteer Befriender

If you have an hour or two a week to brighten someone's day with a visit at home, call our Befriending Coordinator on:

020 7232 5669

or complete our volunteering form:
timeandtalents.org.uk/volunteer

To ensure that you are happy and confident Volunteer Befrienders, we provide induction, training and friendly support, along with opportunities to meet other volunteers

Time & Talents, The Old Mortuary, 54 Marychurch Street London SE16 4JE Reg. charity no. 1084545

Dates for your Diaries!

Boats on the Water will take place on Saturday, 11th July.

Learn to make and sail paper boats and tuck into some tasty fish 'n' chips with families at Canada Water Library.

This is part of the Illuminate Rotherhithe & Bermondsey festival. This is just one of the big, family-friendly events that will commemorate 400 years since the sailing of the Mayflower ship with its famous Rotherhithe resident - Captain Christopher Jones.

Summer Party on Friday 24th July

The whole community gathers at T&T's hotly anticipated annual extravaganza at The Old Mortuary, with much loved resident band Peachy Beat.

PLASTIC FREE WATER

SOUTHWARK'S FOUNTAINS FLOW

Victorian Drinking Fountains Come Back to Life

While many of us are struggling with a 'dry' February, it is worth remembering the need for safe, clean drinking water has always been important for our health.

Long before our concern over single use plastics, the Victorians, in the mid-1800's, were keen to make sure water was freely available to the public from public drinking fountains. We are lucky enough to have a few of these fountains, the Jabez West fountain in Southwark Park and the Nathaniel Montefiore fountain in the churchyard of Saint James', Bermondsey.

Due to their age they were in need of repair, in fact the Nathaniel Montefiore fountain wasn't even connected to a water supply! With a funding contribution from the Heritage of London Trust, the Council has renovated both fountains.

The Montefiore fountain was cleaned, completely dismantled, connected to mains water and rebuilt. The photographs show the renovated fountain and the flower petal detail on the drinking taps. Unfortunately, one of these details was missing and our contractors, the London Stone Conservation Company, arranged to have a copy cast. Although turned off for the winter, the fountains will be up and running in spring, ready for you to top-up your water bottles. Thanks to Dominic Leary, Council Officer at the Council, for ensuring this project has been successfully completed!

Any hope for the fountain at Fountain Green Square?

As you can see from the photograph, this fountain is also in need of repair! Perhaps some of the money that Tideway has given the Council can be allocated to bring this neglected local feature back to life?



The Jabez West Fountain, Southwark Park



The Nathaniel Montefiore Fountain, St. James' Church Gardens, Old Jamaica Road, Bermondsey



Fountain, Green Square

SLIP SLIDIN' AWAY!

PLANS TO BRING BACK THE BERMONDSEY JOYSLIDE

Thousands of Bermondsey children loved to play on a 'joyslide' between 1921 and the mid-1980's

The slide was the idea of Arthur Carr, of the famous Peek Freans biscuit factory. Arthur noticed children of the area using the wall by the steps of the Saint James' Church as a slide. He was supported by Ada Salter who was a tireless campaigner for improvements to housing, green spaces and recreation for all residents. It was a way of improving the health and quality of life of local people.

Approaching the 100th anniversary of its creation, local campaigners are seeking to raise money for a new 'joyslide' for the 21st Century. It will be located on the original site as part of the existing children's playground.

The design of the new 'joyslide' will be different from Arthur and Ada's one, but the new one will be designed for the same purpose - to provide a means of enjoyment for children living locally.

As well as the Council, the project has the support of Saint James' Church and Grosvenor Estates, the new owners of the biscuit factory, all coordinated through the Friends of Saint James' Churchyard.

The project will include a history board telling the story of the original slide. The target required is £60,000. It is hoped that this sum will be raised or pledged by this March, so that construction can take place during 2020. Time is short!

Funding has already been secured from Southwark Council, from Rotherhithe Consolidated Charities and the Saint Olave's and Bermondsey United Charities. Already over £33,000 has been raised from the Council's Cleaner, Greener and Safer funds and hopefully it will be successful in achieving more funds from other sources.

Fergus Carr, the great, great grandson of Arthur Carr, has designed the new slide and made a donation.



HOW YOU CAN DONATE

To donate online go to www.joyslide.com

Donations, no matter how small, can be sent by post to Saint James' Bermondsey PCC, St James' Church, Thurland Road, SE16 4AA. Or, you can pay your gift via a bank transfer, please 'phone 020 3643 2327 for more details.



Follow the Words to Find

“What are you going to meet if you turn this corner?”

‘Around the Corner’

You can easily follow the Culture Mile that allows you to explore the City of London that’s just across the river. You will be guided through the streets by a quote from Virginia Woolf’s novel Jacob’s Room .



‘Around the Corner’ is an installation by Karsten Huneck & Bernd Truempner. It begins at the Millennium Bridge, with each word of the sentence located at points along a walking route where they act as a way finding tool. It’s also a sculptural attraction where you are informed about the Culture Mile and the places where each word is located. Search for their video clip on YouTube to see more.

This art installation will help you to find our feature venue – the amazing and large – Museum of London.

The Museum of London



The Museum of London tells the ever-changing story of this great world city and its people, from 450,000 BC to the present day. Its galleries, exhibitions, displays and activities seek to inspire a passion for London and provide a sense of the vibrancy that makes our city such a unique place.

The museum is open daily from 10am to 6pm and is free to all. You can also explore the Museum of London with collections online – home to 90,000 objects with more being added every month.

Current exhibition highlights include The Clash, London Calling. This is an exclusive free display celebrating a truly London album that became one of the most influential of all time. Now open and free to view until 19th April.

To find out more about what's on at the Museum of London including family friendly February half-term events visit www.museumoflondon.org.uk.

The Museum of London is located at London Wall, EC2Y 5HN. Only a seven minute walk from Saint Paul's Cathedral. It is very easy to find – just follow the art installation 'Around the Corner' that forms part of the 'Culture Mile' (see opposite page). From Jamaica Road, jump on the 381 bus and get off at the Tate Modern, on Southwark Street, then aim for the river, and walk over the Millennium (wobbly) Bridge.



Deep Down at Chambers!

The Thames Tideway Tunnel is currently being built beneath the river Thames. It will run from Acton in west London, through Chambers Wharf, then on to the Abbey Mills Pumping Station in Stratford east London, where it will join the recently constructed river Lee tunnel.

Currently, London has a Victorian combined sewer system, meaning that rainwater and sewage go into the same sewers. When it rains heavily, the sewers fill up and untreated sewage overflows into the Thames. Once completed, the super sewer will help to keep our river clean.

The project has 24 sites across London that intercept some of the most polluting sewer overflows and once construction is fully underway, the project will have six tunnel boring machines (TBMs) tunnelling underground.

Works at **Chambers Wharf** are progressing well as they get ready to start tunnelling from Greenwich to Bermondsey and Bermondsey to Abbey Mills later this year. The main drive site for the east section of the project is at Chambers Wharf and a **64 metre deep shaft** has just been constructed. Large circular openings at the bottom of the shaft walls are now being created, through which the TBMs will pass. These openings, known as 'tunnel portals', can be seen in the photograph. Construction work on the site now includes constructing a secondary concrete lining to the shaft, to reinforce the shafts strength.

Elsewhere on the project, they are starting to build the underground chamber from which the TBM travelling from Greenwich to Bermondsey will arrive. In the west section of the tunnel, Rachel, named after **Rachel Parsons**, an engineer and advocate for women's employment rights, is currently tunnelling 7km from Fulham to Acton.

A major achievement for the entire project was seen in west London, with the first tunnel breakthrough for the project. TBM 'Charlotte', named after suffragist **Charlotte Despard**, completed the first 500 metres of the Frogmore connection tunnel in October. Charlotte has been returned to its starting point in Dormay Street to tunnel a further 600 metres to Carnwath Road Riverside in Fulham. The Frogmore connection tunnel will carry sewage overflows from King George's Park to the main 25km super sewer at Fulham.



The central section of the project has two TBMs digging this section of the tunnel. Both have been launched from a site near to Battersea. Millicent, named after **Dame Millicent Fawcett**, an English feminist, intellectual, political and union leader, was launched in November 2018 and completed her 5km drive west to Tideway's Carnwath Road site in Fulham at the end of last year. The second TBM, Ursula, named after **Dr Audrey 'Ursula' Smith**, was a British cryobiologist, who discovered the use of glycerol to protect human red blood cells during freezing, set off eastbound from the same 45m deep shaft at Kirtling Street in March last year. To date, she has tunnelled just under 4km of her 7.5km stretch of tunnel and is currently making her way, underground, towards the Chambers Wharf site as you read this.

More information about the Thames Tideway Tunnel can be found on their website at www.Tideway.London. If you want to monitor progress of the tunnelling machine as it makes its way to the Chambers Wharf site, then please use the link below. <https://www.tideway.london/tbm-tracker>



Community Funding

Tideway's Super Sewer Provides Money

The Thames Tideway Tunnel is currently using their site at Chambers Wharf to construct a storage tunnel to stop raw sewage entering the River Thames during periods of rainfall. Once completed, the tunnel will be the same width as three double decker buses, similar to cross-rail!

Tideway has provided over six million pounds to Southwark Council to undertake local improvements around the Chambers Wharf site. These payments, known as Section 106 funding, are made by Tideway to allow the Council to undertake major improvements and are listed below:

Improvements to local play spaces (including George Row & Cherry Garden)	£600,000
Improvements to local pavements, road crossings & road networks	£700,000
Improvements to local walking & cycle networks	£300,000
Improvements to the Thames Path and local open spaces	£300,000
Contributions to the three local schools near the construction site	£2,700,000
Community Enhancement Fund for the local defined area	£1,000,000

Tideway's Section 106 payments also provide funding for the Council to employ a dedicated monitoring officer to oversee the funds and ensure they are spent on improvements in the local area. The Council has recently appointed Jacqueline Christie to undertake this role and we will bring you updates on the progress of these improvements in future editions of your Community Magazine.

One of the more unusual items in the Section 106 fund is the one million pounds worth of **Community Enhancement Funds**. Although administered by the Council, this fund is specifically for community improvement projects around the Tideway construction site at Chambers Wharf. Local residents and organisations based around the site can put ideas forward. These are then reviewed by a panel of local representatives (Dragons' Den style) to ensure the ideas are of interest and that the funds will be spent to benefit the community.

To date, nearly £250,000 of local improvements have been approved by the Community Enhancement Panel including funds for Felton Hall Nursery, Bermondsey Community Nursery, a community music event, a community social day, planting of flowers and the replacement of the heating boiler at the Downside Fischer Youth Club.

If you would like to find out more, or have an idea and wish to apply for funds from the Community Enhancement Fund, then please contact Jackie Christie directly at the Council via Jacqueline.Christie@southwark.gov.uk. Alternatively, if you wish to find out more about being on the approval panel, then contact Jackie for more details.





Dockland Settlements

Supporting local communities for more than 120 years

Locals Supporting the Homeless

The Dockland Settlements would like to thank everyone who made a contribution towards winter care packages for the homeless. Over 120 winter packages, with so many extra items included, have been given to homeless people.

Lots of residents in Bermondsey and Rotherhithe generously donated food, toiletries and other essential items and these were distributed to the homeless locally and the wider area.

Over this winter another Centre, on the Isle of Dogs, hosted homeless people during the cold nights with many more who called by during the day to enjoy a hot meal, shower and even a haircut.

This year, the Centre in Rotherhithe is looking forward to providing more



activities for the local community. They are always looking for new ideas, so please get in touch and let Dannica and Sarah, the Centre's dedicated managers, know of what activities you would like to see.

Follow The Dockland Settlement on Facebook to be kept up to date with all that the Centre have to offer.
www.facebook.com/Docklandsettlements



Thanks to Dannica Bezuidenhout, Centre Manager, at the Dockland Settlements Rotherhithe for the photographs.

BOSCOFFEE CAFÉ & LOCAL COLLEGE

This superb community café runs really well, offering great food, and real coffee, all at affordable prices. The café is child friendly with a dedicated play facility to keep toddlers busy within the café. On Wednesday's from 12 to 2pm students studying Child Care are on hand to help keep little ones busy.

Jeanie and Pauline run the Boscoffee Café with a team of helpers, Haroun, Emmanuel, Ruth & Aaron, students from the Bosco College on Jamaica Road. The café is just off Rotherhithe Street, close to the C10 and 381 bus stops; just a ten minute ride from Jamaica Road!

Boscoffee Café is a 'not for profit' facility for all the community and is open daily from 9.30am onwards and doesn't close until late in the afternoon.

It's currently closed at the weekend and it's not open in the school holidays.

Well worth a visit after seeing all the furry animals at the Surrey Docks Farm, which is just around the corner, or after a class at the Docklands Settlement.

Who supports this new café?

The Bosco Centre started 35 years ago as a youth club. It was founded by Sister Cecily who passed away four years ago but 'handed the flag' to the current director Darren Coghlan. Boscoffee Café is the brainchild of Darren with his vision that young people can gain real work-life skills, in a real café, that will enable them to gain employment in the future.

The Bosco aim is to break down barriers that prevent young people from learning, growing and achieving.



THE SURREY DOCKS FARM

Family Visits in the School Holidays

The school holidays are a great time to visit Surrey Docks Farm, which is free to enter and open seven days a week from 10am-4pm. The farm shop will be selling animal feed (£1 a bag) and the yard is open for you to enter and mingle with the friendly goats.

In the holidays the volunteer team will be offering meet the small animals sessions - from 2:30-3pm, Monday-Fridays. This is a fundraising activity for the Farm so there is a small charge of £1 per person, in return you can get hands on and stroke the rabbits, guinea pigs, ferrets and chickens! No booking required, just turn up, but please be aware the Farm needs good weather and enough volunteers to enable these sessions to go ahead.

Farm Holiday Club for 8-13 year olds

Surrey Docks Farm holiday clubs are the perfect opportunity for children to get hands on farming experience! Activities include a mixture of feeding, grooming and mucking out their friendly farm animals; plus arts and crafts, gardening and nature activities such as pond dipping. Days run from 10am-4pm on Fridays in the school holidays, however booking in advance is essential. Please visit the Farm website to find out more and book: www.surreydocksfarm.org.uk/holiday-activities/

Putting Down Roots in Rotherhithe

The Farm has recently launched our 2020 Programme of Green Workshops hosted at the Farm with a range of experts in their field - including urban gardening workshops, exploring natural dying, herbal medicine and beekeeping. Booking is essential to attend these workshops. These are kindly funded by City Bridge Trust.

Featured Green Workshops

Herbal Medicine Workshops are run by Kathie Bishop. Come and learn all about one herb a month, using sensory techniques our ancestors used, as well as learning about their botany, medicinal usage, folklore and how to use them in everyday life.

Urban Gardening Workshops, by Bex Clarke, start this March with an introduction to organic gardening techniques in the vegetable garden. Get involved and learn about key organic gardening techniques to keep your vegetable garden or balcony pots healthy and happy!

<https://www.surreydocksfarm.org.uk/workshops/>

Brand New Garden

Our brand new riverside garden is now ready to be fully designed, from the soil up! Come and get involved through our current volunteer opportunities which now include free accredited training. Their gardening volunteer programme has opportunities for adults who are very new to gardening and for more independent experienced gardeners. It runs on Sundays and Mondays throughout the year. Find out the full details on the Farm's website.

<https://www.surreydocksfarm.org.uk/garden-volunteer/>

www.surreydocksfarm.org.uk



MUSIC TO OUR EARS

MUSICA
ANTICA
Rotherhithe

Local Musicians tackle Global Emergency

The pressing urgency of global climate change and the world of opera will collide later this month, as Musica Antica Rotherhithe perform 17th century music that's about a great flood.

This ambitious group of young musicians will perform *Il Diluvio Universale - The Great Flood* - for the very first time in the UK. The music was written by Sicilian composer Michelangelo Falvetti in the 1682.

A forgotten masterpiece, composed in Messina, tells the well-known story of Noah's Ark, but is full of surprises. "It begins with a fight between the four elements, earth, fire, air and water, over who should be punished for ruining the earth" Oliver Doyle writes. "Of course, water wins and so begins the story of Noah's Ark" and Oliver goes on to say "the music is beautiful, very varied and fun, and is constantly interrupted by grim humour - at one point death dances as everyone not on the Ark is washed away."

Falvetti wrote the piece the same year that a violent storm killed over 600 people in one town in Sicily, but with the current woes of climate change - from fires in Australia to the threat of another great flood - it's not hard to make this piece of music relevant, even if over 350 years old. Thanks to a generous donation from a Chinese businessman Mr WeeKuang Tai, all ticket sales will go to support the Bermondsey-based climate change charity "Operation Noah". Co-founder of Musica Antica Rotherhithe, Jessica Eucker says "we formed in the hope of making beautiful, rarely-heard music exciting, affordable and relevant."



Jessica continues to say "WeeKuang Tai has done more than we could ever have imagined in enabling us to perform this forgotten masterpiece and ensure we have a positive impact on one of the greatest challenges of our times."



Falvetti's *Il Diluvio Universale*

The Great Flood - will be performed on Saturday 22nd February at 7.30pm at Holy Trinity Church, Rotherhithe, SE16 5HF
Booking required.

www.musicaantica.org.uk

ALL TUNED IN MUSIC TO REMEMBER THE MAYFLOWER

Tuned In London presents a year of concerts that invite audiences to reflect on the movement of people around the world.

People 'up sticks' for a multitude of reasons and head to lands unknown.

Tuned In London is marking the **400th anniversary** of the **Mayflower Ship** leaving Rotherhithe's shore, captained and crewed by Rotherhithe residents. It began with flamenco music that arrived in Spain, carried across continents by gypsies. Also featured later year is music from war-torn Kurdish and Syrian traditions, ancestral musical meanderings from east and west Africa, an album launch later in the year and much more.

RAPASA NYATRAPASA OTIENO

Thursday 5th March, 7pm Finnish Church, Albion St, Rotherhithe

Rapasa is a singer songwriter and great advocate of traditional music. He plays east African indigenous instruments, his principal love being the Nyatiti, a beautiful lyre of the Lüo community, whose people now live along the Kenyan shores of Nam Lolwe (Lake Victoria), from where he hails. His music, steeped in heritage, is a journey, that follows the music of the Nyatiti. His ancestors migrated along the great waterway that is the Nile, drawing a likeness to those who set sail aboard the Mayflower ship in 1620, from Rotherhithe.



TOUKI: AMADOU DIAGNE and CORY SEZNEC

**Thursday, 26th March, 7.45pm
St Mary's Church, Rotherhithe**

Amadou Diagne from Senegal and French-American Cory Sez nec planted the seeds of a future collaboration at a chance encounter busking. Weaving musical inspirations that draw on west African, American and Ethiopian traditions. Life took them on different touki (journeys in Wolof), but a decade later their paths have rejoined with a brand new album, Right of Passage. This is fresh out of Peter Gabriel's Real World Studios. Kora dances playfully with banjo and guitar whilst the calabash adds powerful, driving beats. Their silky, soulful voices entrancingly envelop the music.



www.tunedin.london

Splashing Fun!

Keeping Children Active over Half Term
Seven Islands Leisure Centre

everyone
ACTIVE

With half-term coming up, children will be full of excitement, anticipating a week of fun and activity. As a parent, this can be a time of racking your brains to come up with new and exciting ventures for children to take part in and tell everyone about once they are back at school.

To help inspire you, Seven Islands Leisure Centre has put together some ideas to keep the boredom at bay and the excitement levels high!

Learn something new – Just because children aren't at school, doesn't mean they can't be learning. The school holidays offer a time for honing a new craft. Everyone Active, who run the Centre, knows the importance of helping children to channel their energy, whilst learning new skills. That's exactly why they offer a range of activities throughout their sites to suit all needs. Take your children and teenagers along to the Centre and get them involved in anything from gymnastics and dance to football coaching and multi-sport activities. Pop on down to Seven Islands and see what activity takes your fancy.

Advice for pupils on holiday - get into a routine – the school holidays can really have you finding yourself out of routine. You go to bed at random times, wake up late and lose the natural rhythm of your day. If you're someone who loves keeping to a regular plan, needing something to leave the house for on a reoccurring basis, the leisure centres in Southwark offer Junior Gym sessions for 11-15-year olds to keep you engaged and active. It's also perfect for building good fitness habits from a young age. Worth making it part of your holiday routine.

Ready Steady Cook! – Cooking is an essential skill for life, so why not get in the kitchen and help channel your inner Jamie Oliver? The Centre offers children the chance to create their own snacks and meals.

Go Swimming – Just because it's winter, doesn't mean missing out on the fun of splashing around in the water. The Centre is hosting swimming crash courses throughout half term. There's never been a better chance to get confident in the water, so get those costumes packed, goggles tightened and get swimming.



Get Out on the Water – If your child already loves being in the water, why not encourage them to get into water sports? At Surrey Docks Watersports Centre they can learn all about canoeing, kayaking, sailing, amongst other activities. Book into a class now and watch their faces light up with the prospect of a fun adventure on the horizon.

Holiday camp – Whether your child is an artist, singer, dancer or sports person there's a camp for everyone. It's not only a chance to enhance their skills in the chosen area, but also increase confidence, stay active and make new friends too! In partnership with Fit for Sport, Everyone Active hosts a range of activity camps for children. With activities like football, arts & crafts, tennis and multi-sports games taking place, book in for a week of fun!

<https://www.everyoneactive.com/southwark-clubs/>

"Generation Games"

Seven Islands Leisure Centre hosts a weekly social event to combat loneliness in older adults. A shocking new report from Age UK has revealed that almost four million older people in the UK live alone, with almost two million often feeling ignored or invisible. The physical impact of loneliness has even been discovered to be as harmful to our health as smoking as many as 15 cigarettes a day. Following these statistics, Seven Islands has launched a new weekly social event for older adults.

The weekly event "Generation Games" aims to bring elderly individuals together who may be lacking in friendship and companionship and enable them to feel supported by the local community. The event, which runs every Thursday from 10am-12pm, features group activities such as pool, table tennis, darts and board games. Each session costs £2.50 per person.

New Play Facility

New Play Space for George Row

Local residents may remember that over the past few years consultation has taken place under the banner of the **Bermondsey Riverside Community Project** for improvements to several open spaces.

This work is being funded by the **Thames Tideway Section 106 contributions** and led by a **community project board**.

The project looked at areas on the Dickens Estate and the wider Section 106 area.

Feedback from public events and work with schools, youth groups and residents groups fed into a report that was submitted to the Council last year.

After reviewing the report, Councillors opted to concentrate on improving the George Row Ball Court and the Council carried out a consultation last summer looking at either upgrading existing features or changing the site to a more accessible play space for all ages. Of the 83 responses that the Council received, 57% voted for the second option: changing George Row to a more accessible play space and remove the existing ball court.

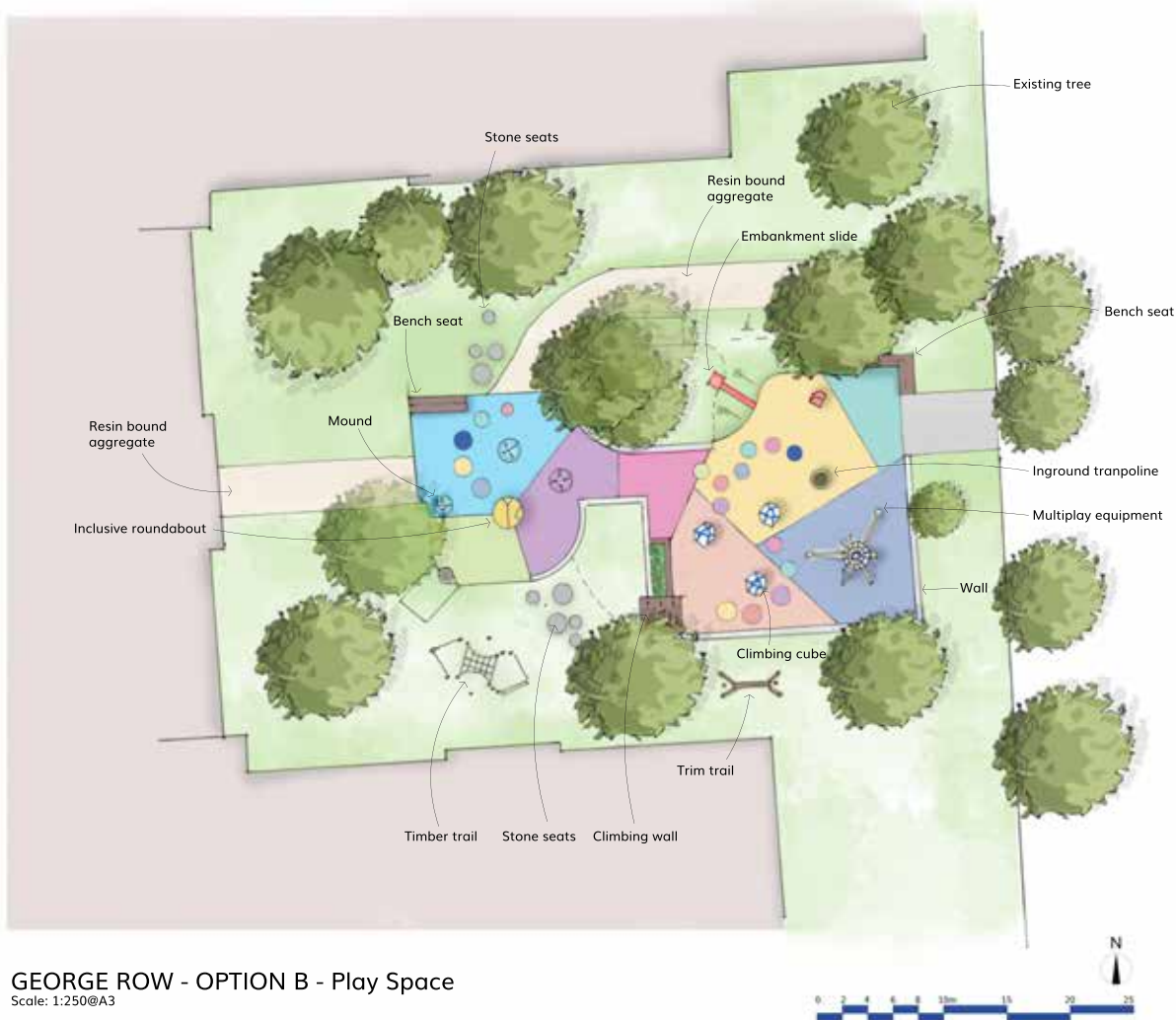
The final step is to agree with the local community the detail of what the new play area will contain and get feedback on final design options.

Planning and design consultants, Wynne-Williams Associates, are working on behalf of the Council to consult further with the community, including residents, schools, youth groups and existing respondents to previous surveys.

Local residents can contact the design team at grb@w-wa.co.uk with any queries or want to find out more, and an online consultation will be available from the beginning of March 2020 at <https://consultations.southwark.gov.uk/>

Please look out for new posters detailing other ways to get involved and save the date of our public event showcasing the next stage of design ideas. This will be held at:

**Wade Hall
Parkers Row, SE1 2DH
Saturday, 21st March
From 12 to 4pm**



GEORGE ROW - OPTION B - Play Space

Scale: 1:250@A3

Calling New Business

Helping New Businesses to Thrive at Canada Water

Do you have a great business idea?

THRIVE may be able to help you!

Located at Canada Water, this is a **low-cost working and maker space** available to help your business grow.

THRIVE is a business support hub which offers low-cost co-working space for local small businesses and local entrepreneurs - from fashion to counsellors to film makers!

British Land & Tree Shepherd have partnered to transform the old Flamin' Grill unit in Surrey Quays into a new co-working space called THRIVE. This affordable space helps residents develop their business ideas, meet together and get their start-ups off the ground. After launching last year, the space has become much-loved by local people and now has a film-maker, counsellor, cocktail maker, fashion designer and a property manager all running their businesses from one location.

You can breathe at THRIVE! It has more space than your business could ever need, including a fantastic making space, specifically designed for designers and makers to spread out and see their patterns come to life on large custom-made tables. It also has a rehearsal space, meeting rooms and a hot-desking area. There is access to a kitchen, toilets and super-fast WiFi within a well-lit and friendly environment.

At the heart of THRIVE is a determination to create a sense of community where local people can support each other on their different business journeys. The aim is to connect local businesses, both old and new, with each other and create opportunities, in a low-cost space for those who otherwise couldn't afford the high market rents.



What's on Offer?

THRIVE specialises in working with entrepreneurs from low income families from the local area. You can become a THRIVE member for as little as £25 per year and use the meeting and desk space on a low-cost, pay-as-you-go basis, or use the space more regularly with a monthly subscription.

THRIVE is now offering a special offer for February and early March - book for three months in the making space or hot-desking area and get a month free! For more information email thrive@treeshepherd.org.uk

Bermondsey & Rotherhithe Community



Blue Plaques Galore!

For a small part of Southwark this area has a lot of 'Blue Plaques'. These are placed on walls of buildings to commemorate people, places and events that helped to shape the area. The front and back covers pages of this edition show most that exist locally. However, there are some important and well-known people who are absent and have no blue plaque. Here are a few:

Ada Salter – a social campaigner in 1920-30's, local councillor and first women mayor of Southwark. Ada lived locally and did so much to make improvements to local housing and founded the Wilson Grove estate.

Dr Alfred Salter – husband to Ada, trained in medicine at Guy's hospital, local GP, elected MP for Bermondsey (1920-1945) and, like his wife, did so much to help improve the area, getting rid of slum housing and he made lots of other improvements.

Max Bygraves – born and lived locally. Was a household name in the 1950-70's and older residents will fondly remember his nippy songs including "Tulips from Amsterdam", "You're a Pink Toothbrush, I'm a Blue Toothbrush" and many, many more. Younger residents can find Max on YouTube to hear his lovely Bermondsey accent and great singing voice.

Do you think these people should have a plaque? Can you think of any more people locally who should have a blue plaque? Or are there places or events that should also be commemorated? Phone, email or write to the Editor who can then collate suggestions and submit to the Council and English Heritage for their consideration.

Email: copyinfo@virginmedia.com
Telephone: 07960 975 155
Letters: The Editor, c/o Roses Café,
Spenslow House, Jamaica Road, SE16.

Looking for Employment Opportunities?

Over 40 people attended the North Bermondsey jobs and volunteering fair that took place in Wade Hall on the Dickens Estate. A variety of stallholders were present offering information and advice for employment, training and apprenticeship schemes.

There was also information to raise awareness around local volunteering opportunities, skills and training.

The next step is to build on the feedback received from the local community and plan more local job fairs later in the year – watch out for posters in notice boards.

Thanks to Jacqueline Christie, at Southwark Council, for organising this successful event.

The Next Edition

"Spring in Bermondsey & Rotherhithe!"

We hope to bring you the eighth edition just before the Easter school holidays. This will help you to plan family activities and trips over the two-week break.

Any organisation (not-for-profit) can contribute news or articles but please contact the editorial team early, as space is limited! Final copy for the next issue needs to be us by Monday, 2nd March.

Your views about this magazine are always appreciated. Please provide feedback and suggestions of how we can improve. Email copyinfo@virginmedia.com with your thoughts or 'phone Larry on 07960 975 155 or you can write to Community Magazine, c/o Roses Café, Spenslow House, Jamaica Road, Bermondsey, SE16.

Thank you to our splendid designer, Kelly, who makes this magazine look so magical! Thanks also to all the editorial team who have worked hard again to pull this edition together.

Finally, thank you to Tideway, and the Council, for their continued support and for funding this community magazine.

Community Magazine

for Bermondsey & Rotherhithe

London Borough of Southwark
Surrey Docks Fire
On September 7th 1940
the docks were set on
fire in the first raid
of the Blitz
Voted by the People

London Borough of Southwark
**Druid Street Arch
Bombing**
On October 25th 1940 a bomb
fell through the railway arch
killing 77 people sheltering
from the air raid
Voted by the People

London Borough of Southwark
**Isambard Kingdom
Brunel**
1806-1859
Great Victorian Engineer
His first project was the Thames
Tunnel, the world's first
underwater tunnel
Voted by the People

London Borough of Southwark
Bobby Abel
"The Guv'nor"
1857-1936
One of England's finest
ever cricketers
Learned his cricket in
Southwark Park
Voted by the People

London Borough of Southwark
Bermondsey Abbey
Founded as a Priory
of the Order of Cluny
Stood here
1082-1538
Voted by the People

London Borough of Southwark
Tommy Steele OBE
Entertainer
Born Bermondsey,
17th December 1936
Voted by the People

London Borough of Southwark
Sir Michael Caine
1933-
Film legend
Born in St Olave's Hospital,
Rotherhithe
Voted by the People

Uganda Heritage Association
**King
Edward Frederick
Muteesa II KBE**
1924 -1969
First President of Uganda
lived here
UK & Ireland

London Borough of Southwark
Richard Carr-Gomm
1922 -
Social Reformer
Founder of the Abbeyfield
and Carr-Gomm Societies.
Lived and worked
here.
Voted by the People

ENGLISH HERITAGE
**DEREK
JARMAN**
1942-1994
Film-maker, artist
and gay rights
activist
lived and
worked here
#

Editor
Larry Broomhead
copyinfo@virginmedia.com
07960 975 155

Design & Print
kreative.one
hello@kreative.one
kreative.one